

# EETI eGTouch Utility Guide for Linux

## TABLE OF CONTENTS

---

<b>TABLE OF CONTENTS</b> .....	0
<b>Sec 1: Introduction</b> .....	1
<b>Sec 2: Setting Touch Parameters</b> .....	2
<b>2.1 General Page:</b> .....	2
<b>2.2 Setting Page:</b> .....	3
<b>2.3 Tool Page:</b> .....	4
<b>2.4 Display Page:</b> .....	8
<b>2.5 Edge Page:</b> .....	9
<b>2.6 Misc Page:</b> .....	10
<b>2.7 About Page:</b> .....	12

## Sec 1: Introduction

---

EETI driver provides a configuration utility for all kinds of controller. The following is features:

1. **Know Hardware information.**
2. **Easily to set rightclick, beep sound, constant touch filter and several other functions.**
3. **Tools for drawing test.**
4. **Provide 4/9/25 points Calibration.**
5. **Support multi devices.**

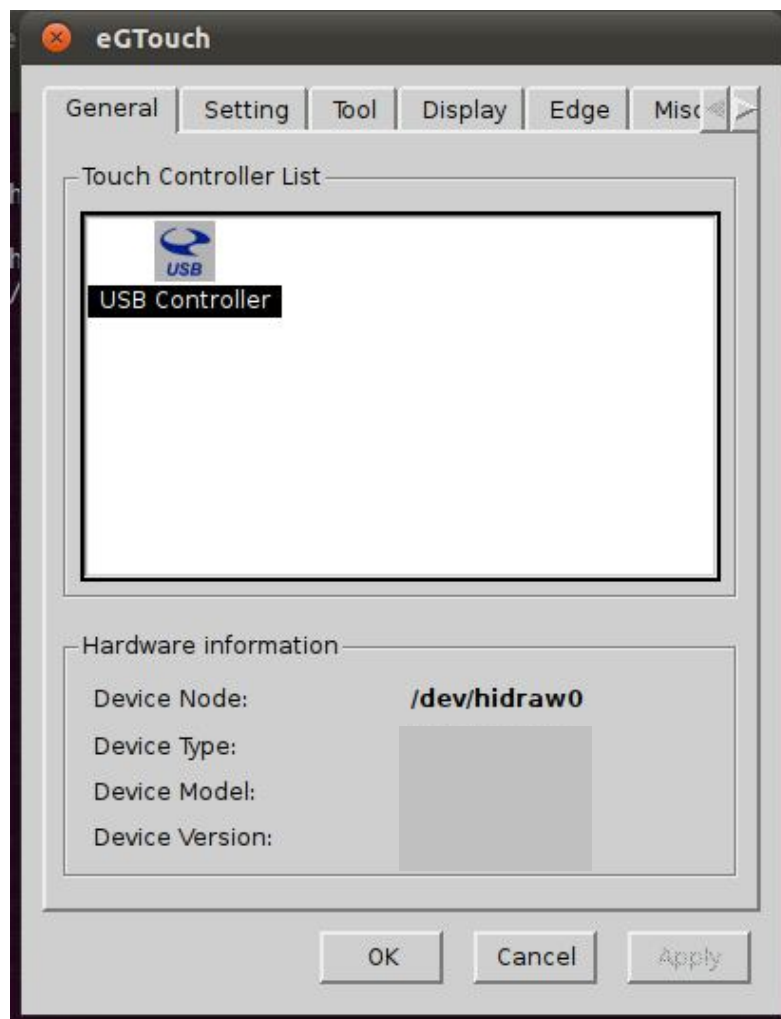
This document would help to use eGTouchU in detail.

## Sec 2: Setting Touch Parameters

The eGTouchU offers an utility to set touch parameters. This utility can be executed only when eGTouchD is running.

There are several pages in the tool, and introduce as following.

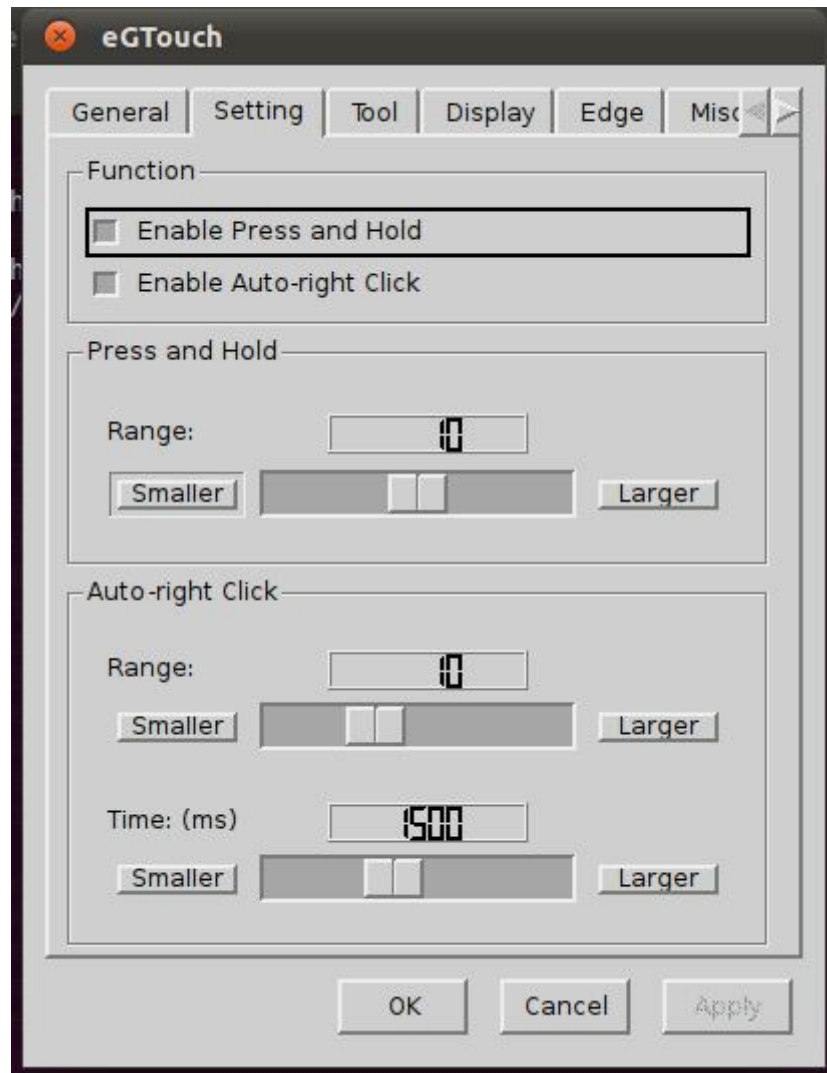
### 2.1 General Page:



Here shows the information of touch controller, and all the touch controller will be listed in the Touch Controller List.

Users can choose the icon in the list to change the devices if there are multi devices.

## 2.2 Setting Page:



### Press and Hold:

Enable Press and Hold: Some of the applications don't want to receive too many points when constant touch in the same location. Enable Press and Hold can help in this situation.

Range: Choose the range when constant touch.

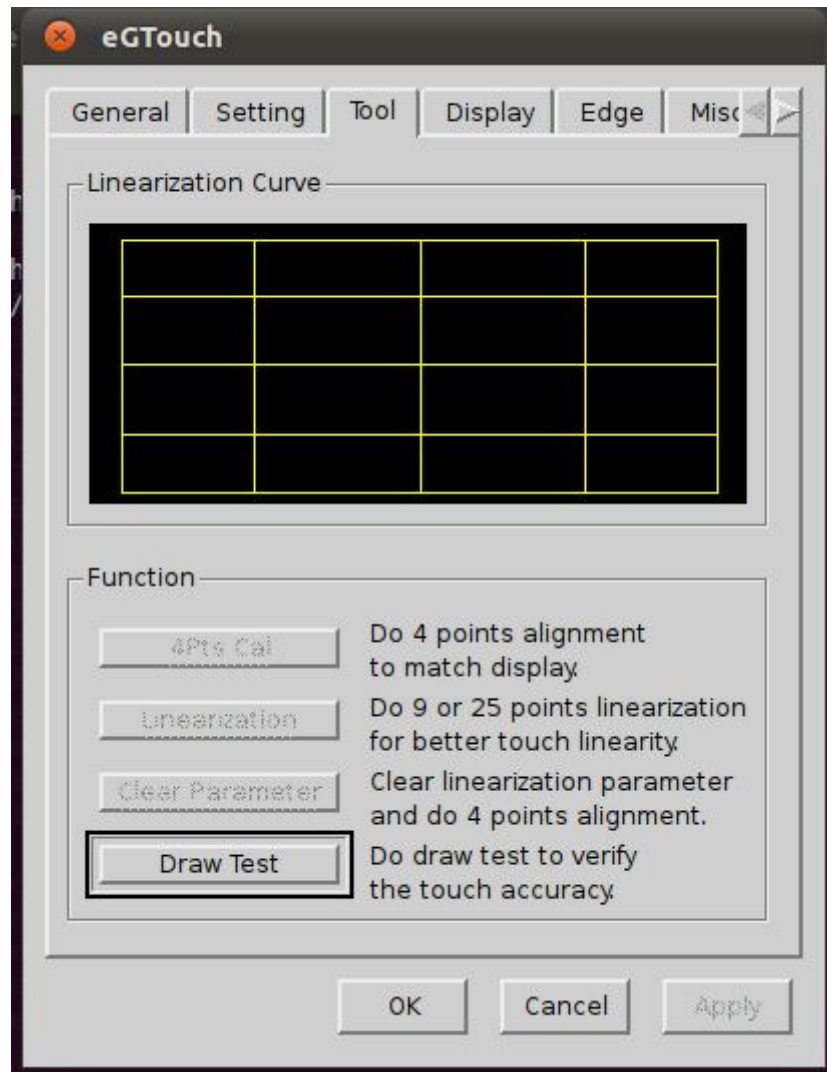
### Auto-right Click:

Enable Auto-right Click: Driver can provide right button click function when you constant touch for a while.

Range: Choose the range when constant touch.

Times: Choose how long you want to trigger right button click.

## 2.3 Tool Page:



### Linearization Curve:

The linearization curve will be shown after doing linearization.

#### 4Pts Cal: (For Resistant or SCAP Panel)



Do 4 point Calibration can make direction of touchscreen correctly.

Just touch the icon until it disappeared.

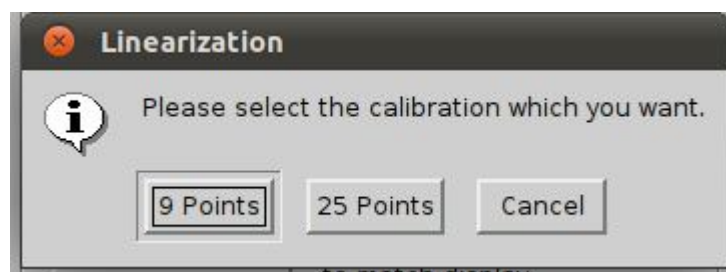
After calibration, a window will pop up and show the result.

Users can **abort** the calibration by pressing **ESC**.

#### Clear Parameter: (For Resistant or SCAP Panel)

Clear linearization parameters and redo the 4 points calibration. **All the parameters for calibration will be cleared.**

#### Linearization: (For Resistant or SCAP Panel)

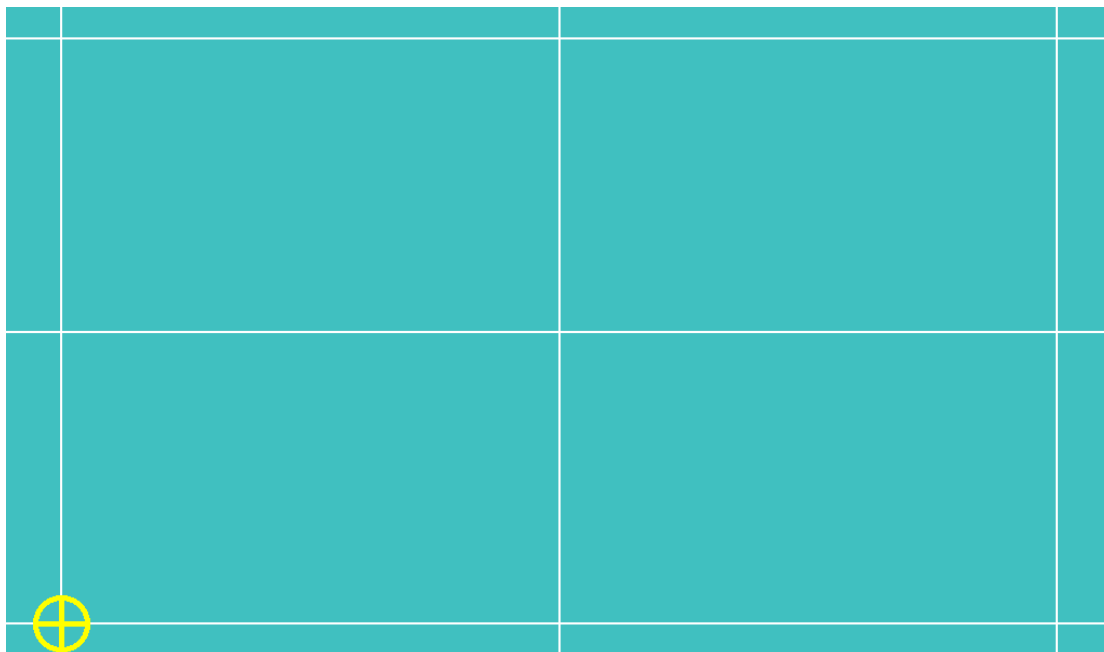


9 and 25 points calibration is available to select.

To make the performance of touch panel more linear, 9 and 25 points calibration is aquirable.

**After doing calibration, all parameters will be overwritten.**

### 9 Points calibration:

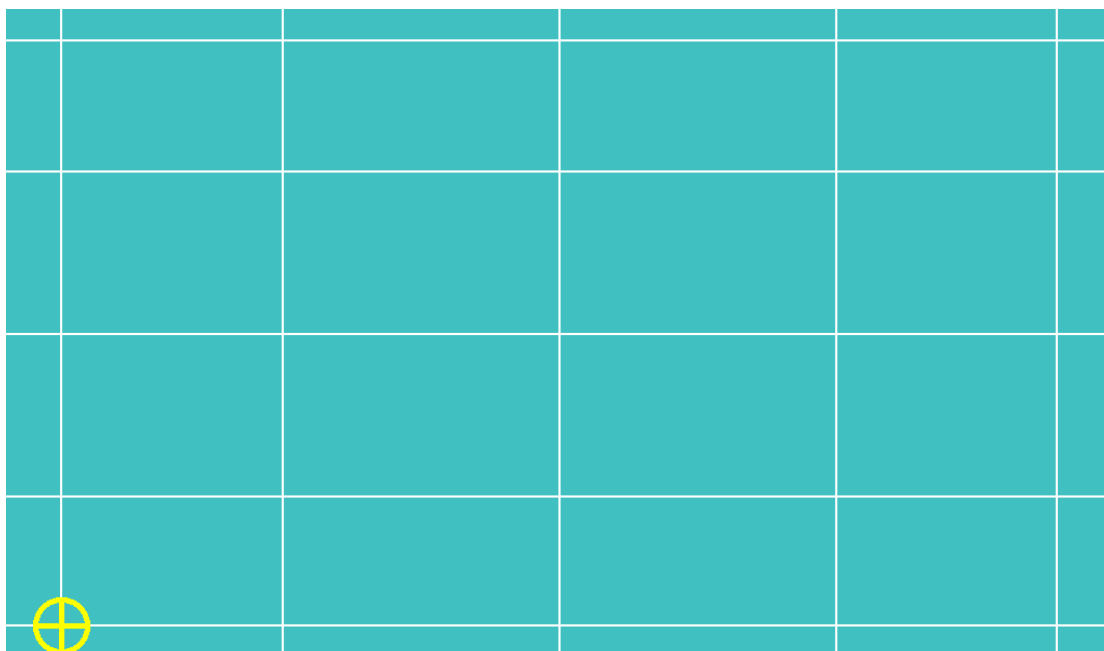


Touch the icon until it disappeared.

After calibration, a window will pop up and show the result.

Users can **abort** the calibration by pressing **ESC**.

### 25 Points Calibration:

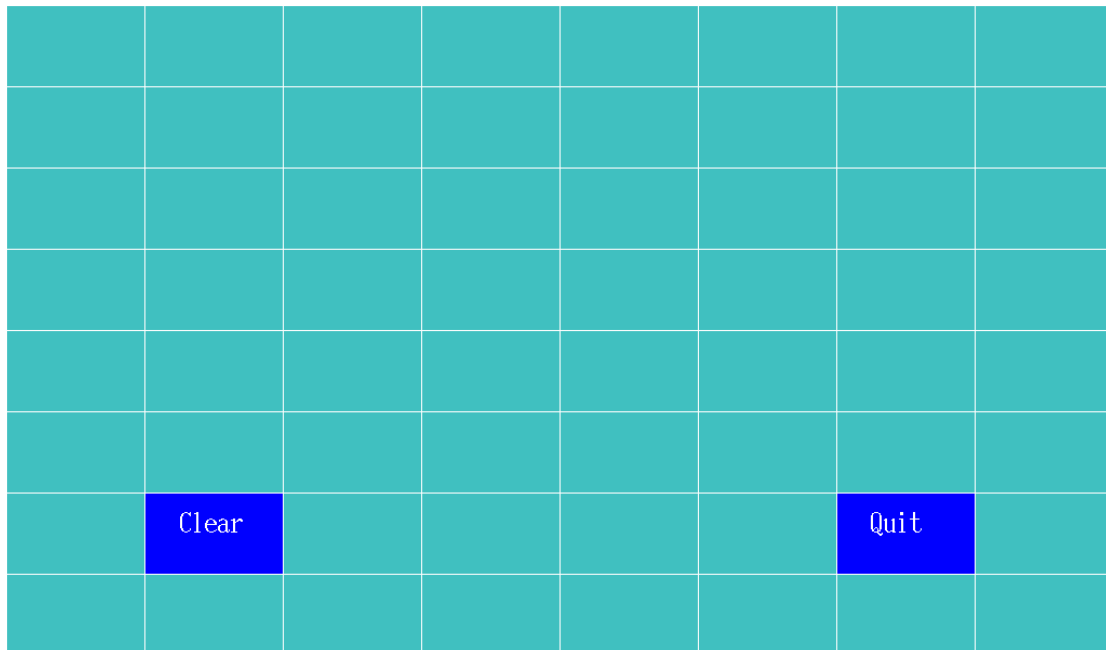


Touch the icon until it disappeared.

After calibration, a window will pop up and show the result.

Users can **abort** the calibration by pressing **ESC**.

**Draw Test:**



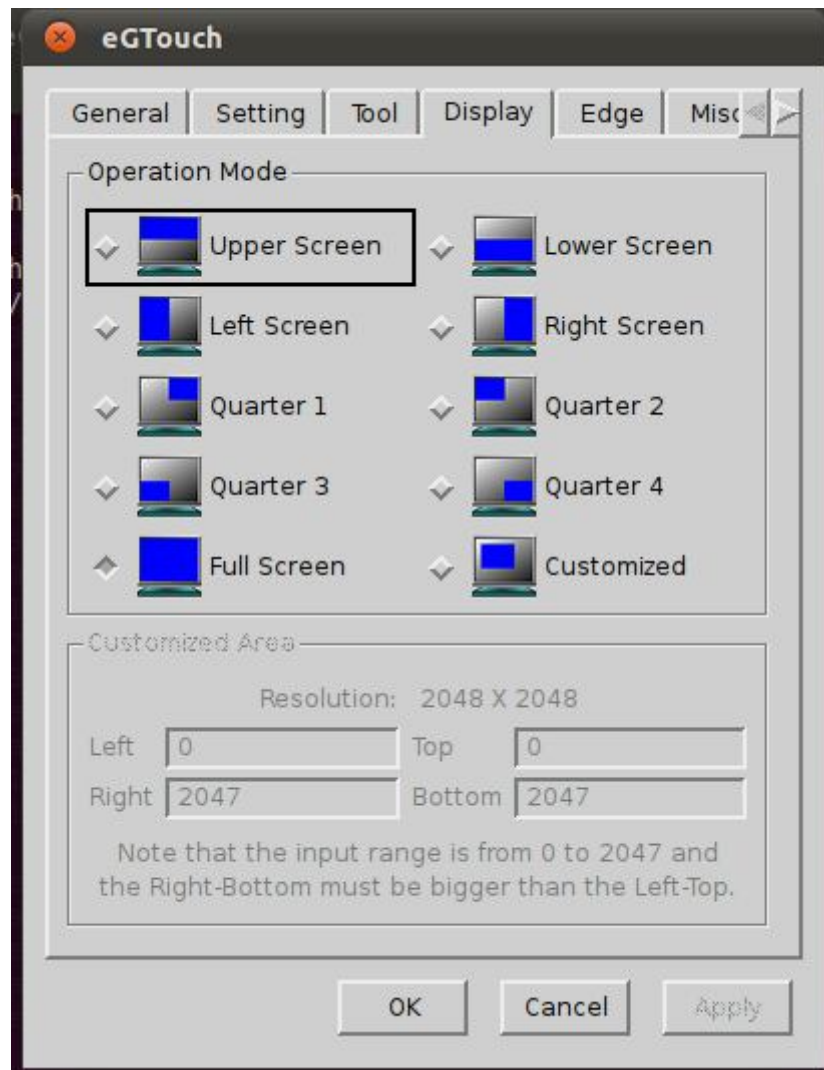
Check the touch performance in this section. Users can draw lines on the screen and make sure the touch accuracy, linearization, response time, etc.

Clear: Clear the screen.

Quit: Quit draw test application.



## 2.4 Display Page:



### Operation Mode:

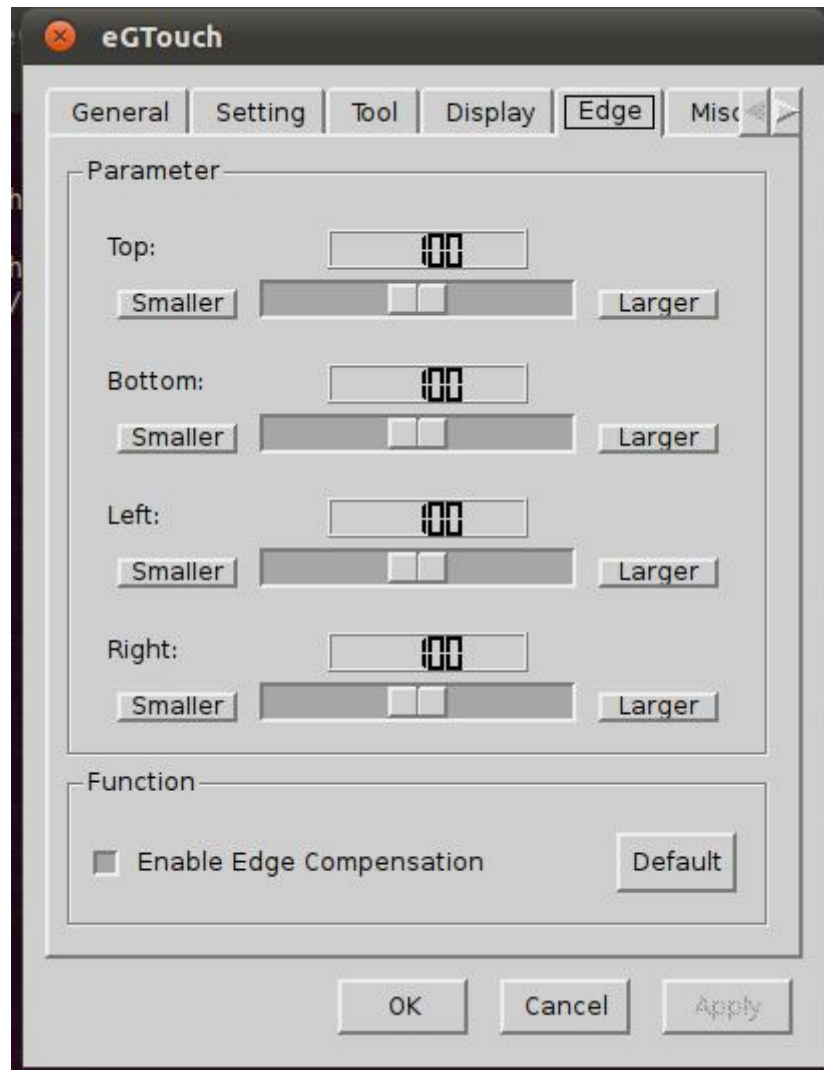
eGTouch can provide 10 kinds of split mode. The user can choose any options to define where the touchscreen will be mapped on the screen.

### Customized Area:

If Customized mode is chosen, users can enter the resolution they want from 0 to 2047.

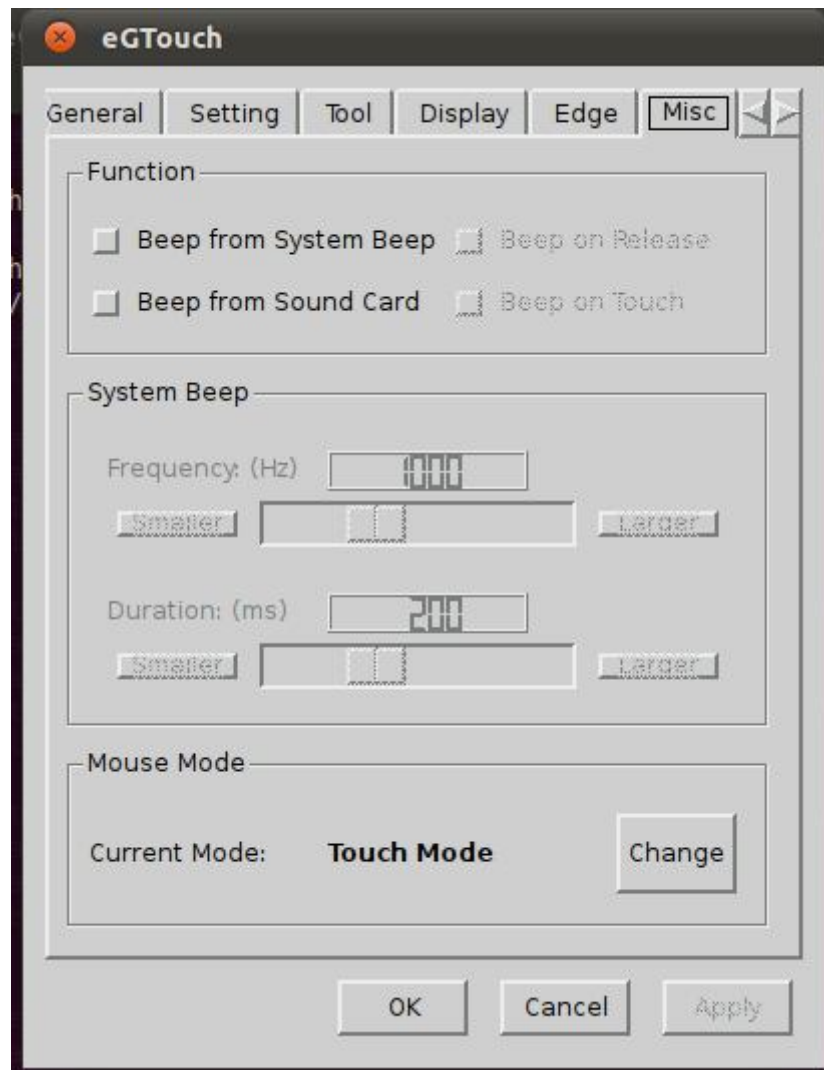
Notice that the resolution must be from 0 to 2047, and the right-bottom must be bigger than left-top.

## 2.5 Edge Page:



Enable Edge Compensation: eGTouch can support edge compensation to make sure the user can touch the edge area.

## 2.6 Misc Page:



### Beep:

eGTouch supports Beep sound when touching.

Beep from System Beep: Driver will generate a beep sound from system beep.

Beep from Sound Card: Driver will generate a beep sound from sound card.

Beep on Release: Driver will generate a beep sound when changing touch state to untouch state.

Beep on Touch: Driver will generate a beep sound when changing untouch state to touch state.

Driver will generate beep sound after Beep from System Beep or Beep from Sound Card is enable, and also Beep on Release or Beep on Touch checkbox is checked.

### **System Beep:**

After enabling system beep, users can control the beep sound.

Frequency: Determine the beep frequency.

Duration: Determine how long system beeps.

### **Mouse Mode:**

eGTouch supports 4 kinds of modes.

#### Touch Mode:

Normal touch mode. Report MultiTouch event format – **BtnTouch**. Support **kernel 2.6.30 and above**.

#### Mouse Mode:

Report mouse event format – **BtnLeft**. The **BUTTON DOWN** event will be sent when users touch the panel, and **BUTTON UP** event is sent when the users lift the panel. If there are two points, the second point will be reported by BtnExtra format.

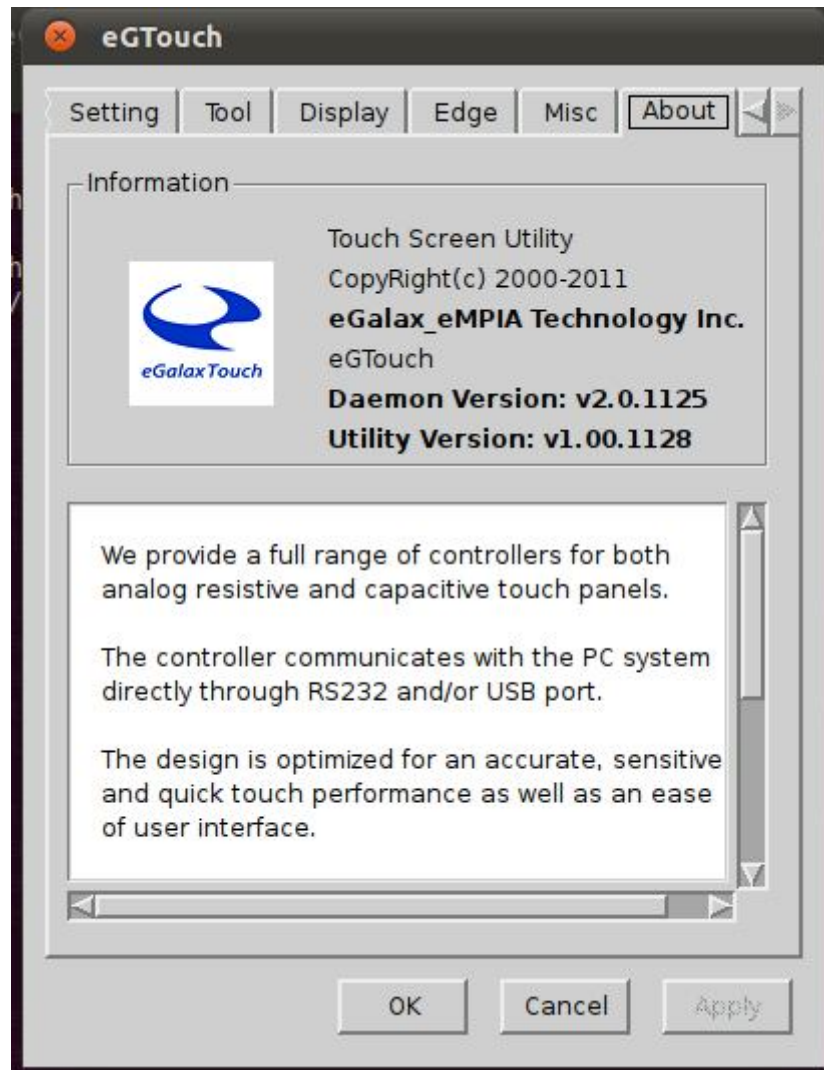
#### Click on Touch:

Report mouse event format – **BtnLeft**. The **BUTTON CLICK** event will be sent when users touch the panel. Support only single point.

#### Click on Release:

Report mouse event format – **BtnLeft**. The **BUTTON CLICK** event will be sent when the users lift the panel. Support only single point.

## 2.7 About Page:



Information about eGTouch.